

United Way of Bemidji Area
PO Box 27
Bemidji, MN 56619
218-444-8929
UnitedWayBemidji.org
Director@UnitedWayBemidji.org



TOGETHER WE CAN DO MORE THAN ANY ONE OF US CAN DO ALONE.

Learn about the programs United Way brings to the community:



Backpack Buddies Food Pack Program

In the Bemidji area, 1 in 5 children experience food insecurity and hunger. The Backpack Buddies program was developed to help ensure children in the Bemidji school district have access to nutritious, non-perishable and easy-to-prepare food at times when other resources are not available, such as weekends and school vacations. Thanks to Sanford Health, the program expanded to feed more than 450 children each weekend.



Someone Special Volunteer Recognition

Area non-profits and organizations recognize volunteers for their commitment and for making our community a better place. Each volunteer is recognized on KB101's morning show, in the Bemidji Pioneer, and with a plaque courtesy of Ken K. Thompson Jewelry.



Volunteer Bemidji Initiative

In partnership with area non-profits, for-profits, civic and community organizations, this online tool provides volunteer opportunities and can help schedule volunteers. Visit VolunteerBemidji.org to see what needs are in our community, who has volunteer requests, and sign up to be of service to others.



Coats for the Community: October

Each year donations of gently used, clean winter coats and outerwear for men, women, children and infants are collected. More than 3,000 cold-weather items are collected and distributed to our Bemidji neighbors to keep them warm and dry during the winter. Community partners: Paul Bunyan Broadcasting's KZY95.5, KB101, Z99 and KBUN, and First Lutheran Church.



Senior Community Clean-Up Day: October

Hundreds of community volunteers help rake yards for senior citizens or people living with a disability that reside within city limits of Bemidji. Priority is given to those who are homebound or physically unable to perform this fall task. To request services, call 333-8261. To volunteer, call 333-8266. Organized by Northwoods Caregivers in partnership with other area non-profit organizations, including United Way.



Holiday Gifts for Kids: December

Last year, 801 Bemidji area children, ages 0-16, experienced a more joyful Christmas because of the generosity and kindness of others. Parents or legal guardians register for the Holiday Gifts for Kids program, and have the opportunity to choose a gift for their child on distribution day. In addition, each family receives a board game to enjoy together. Co-sponsored with RP Broadcasting's 98.3 and Mix 103.7.



NALC "Stamp Out Hunger" Food Drive: May

This one day event encourages Bemidji community members to leave a sturdy bag containing non-perishable foods, such as canned soup, canned vegetables, pasta, rice or cereal next to their mailbox prior to the time of regular mail delivery. Local letter carriers collect donations from homes across the city and deliver them to the Bemidji Community Food Shelf. A special thanks to Letter Carriers, the Bemidji Post Office, and the Bemidji Community Food Shelf for their partnership.



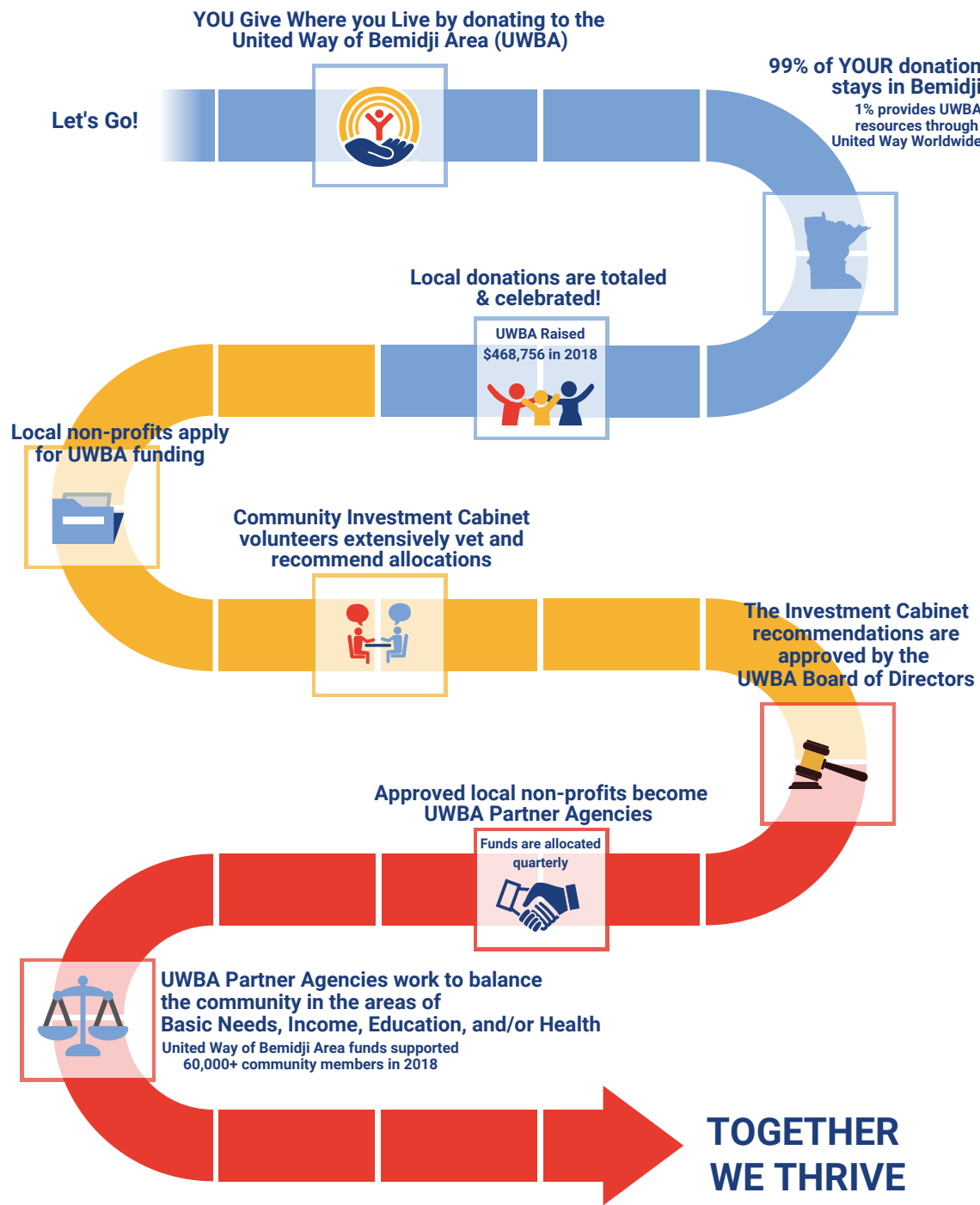
COMING SOON: Dolly Parton's Imagination Library

United Way is raising funds to implement Dolly Parton's Imagination Library program in our community. This book gifting program mails free books to children from birth until age 5.



Our mission: To transform lives in our community by uniting people and organizations to maximize donor impact.

- Mike Karvakko, President**
Karvakko
- Nikki Brink, Vice President**
First National Bank Bemidji
- Jordan Hickman, Past President**
Bemidji Area Schools
- Jeremie Midboe, Treasurer**
Miller McDonald
- JoDee Treat, Secretary**
Beltrami County
- Sarah Hokuf**
Evolve Creative
- Nina Johnson**
Bemidji State University
- Justin Kaney**
Bemidji Brewing
- Sonja McCollum**
Innovative Office Solutions
- Tracy Pogue**
Kraus Anderson
- Myke Stittsworth**
Stittsworth Meats
- Ben Wangberg**
Fuller Wallner, Attorneys At Law
- Jana Wolff**
BSU Foundation



99% of YOUR donation stays in Bemidji
1% provides UWBA resources through United Way Worldwide

COMMUNITY INVESTMENT CABINET

- Jordan Anderson**
Ultima Bank Minnesota
- David Balmer**
First National Bank Bemidji
- Nicholle Bieberdorf**
Sanford Health
- Max Cloose**
Security Bank USA
- LaVon Dennistoun**
Dennistoun Consulting
- Erin Echternach**
Greater Bemidji
- Shari Hahn**
Sanford Joe Lueken Cancer Center
- Drew Hildenbrand**
Bemidji Middle School
- Kurt Knott**
RiverWood Bank
- Brian Ophus**
Beltrami County
- Gail Reff**
Community Representative
- Jeff Scripture**
Clifty Group
- Mark Stodola**
Retired Air Force/NTC
- Tiffany Vickaryous Hubbard**
The Sanford Center
- Dave Wall**
EthnoTrax
- Ryan Zemek**
HRDC

PACESETTER BUSINESSES

Pacesetter Businesses "set the pace" for United Way's campaign by conducting their workplace campaigns early and announcing their fundraising totals at the annual Chili Cook Off.

- 2019 Pacesetter Businesses:**
- AmeriPride Services Inc
 - Beltrami Electric Cooperative
 - First National Bank Bemidji
 - Norbord
 - Potlatch
 - RiverWood Bank
 - Sanford Health
 - Target
 - United Parcel Service (UPS)

AFFINITY GROUPS

WOMEN UNITED
Women United was formed to inspire, educate, and engage women to become actively involved in leadership, philanthropy, volunteerism, and advocacy in support of their local United Way. Each year the group will select a cause in the community to rally around. In 2019 the group focused on the Northwoods Battered Women's Shelter's need for a new facility.

LINC- Lead Impact Network Change
This course is designed to educate, empower, and impact young professionals to make a difference in the Bemidji community. LINC provides hands-on experiences through partner agency tours, one-on-one interviews with partner agency directors, a Board 101 training, panel discussions, and the implementation of initiatives based on community issues. The course is open to young professionals in the Bemidji Area every January through June.

United Way invests local funds to support Partner Agency programs and services that help support families as a whole. By becoming a United Way Partner Agency, local non-profits not only receive needed funds, but also support in capacity building, marketing, fundraising, and volunteer connections.

HEALTH	EDUCATION	BASIC NEEDS
Adult Day Services Promotes healthy aging through a system of supportive services for 248 older adults	Bemidji Community Food Shelf 10,003 adults and children receive an emergency food supply	Bemidji Senior Activity Center Older adults gather and socialize while receiving meals, exercise, health checks, tax assistance and more
Community Resource Connections Assist 3,150 individuals in finding resources and enrolling in programs	Community Table Formerly the Soup Kitchen, the Community Table offers four, weekly no-cost hot meals. Volunteers serve 16,001 meals	Boys & Girls Club of Bemidji Area 1,826 youth have a safe place to be, and receive encouragement to realize their full potential
Hope House 102 adults with severe & persistent mental illness receive rehab services and support	Evergreen Homeless Youth Drop-In Center 417 homeless youth receive supportive programming and a safe alternative to the streets	Civil Air Patrol 25 young people gain training and experience to become strong leaders
Peacemaker Resources 3,272 local students receive the tools to find success through social emotional learning	Evergreen Housing Program 139 individuals, ages 16-24, obtain housing, supportive services and become self-sufficient	Churches United 987 children and 1,147 adults receive emergency help and supplies
Reading Corp ServeMinnesota 179 local students benefit from a reading tutor	Northwoods Battered Women's Shelter 782 intimate partner violence victims receive shelter, advocacy, and supportive services.	Headwaters Science Center 29,406 people benefit from hands-on learning and exploration in STEM
Support Within Reach 249 victims of sexual violence are supported and strengthened by a trained advocate	North Country Food Bank Delivers free and wholesale priced food to local agencies, equivalent to 8,529,964 meals	Northwoods Caregivers Provides services and support for 1,246 seniors to allow them to safely continue to live at home
Timber Bay 200 at-risk youth gain a trusted adult in their life	Village of Hope 182 homeless families find shelter, stability, and services to gain their independence	Voyageurs Area Council Scouts BSA Supporting 248 boys and girls as they explore career-based programming

OUR NEIGHBORS NEED US



FACING A CRISIS AND UNSURE OF WHERE TO TURN?

United Way has a Partner Agency who can help when you, or someone you know, is faced with a tough situation. **Community Resource Connections** is a local non-profit organization that specializes in knowing what services and resources are available. They can determine what programs might be helpful, and will assist in the registration process. Their offices are located inside Beltrami County Social Services, Blackduck Resource Center, and on Paul Bunyan Drive. They can be reached by calling (218) 333-0880 or online at www.CRCinform.org.