



UNITED WAY PROGRAMS



Backpack Buddies Food Pack Program

In the Bemidji area, 1 in 5 children experience food insecurity and hunger. The Backpack Buddies program was developed to help ensure children in the Bemidji school district have access to nutritious, non-perishable and easy-to-prepare food at times when other resources are not available, such as weekends and school vacations. Community Partners: Bemidji School District (ISD #31), Sanford Health, North Country Food Bank, Lueken's Village Foods, and Marketplace Foods.



Dolly Parton's Imagination Library

This book gifting program makes reading fun and exciting for local children. Each month a new, carefully selected book is mailed to children in their name directly to their home, with no cost to the family. Children from birth to their fifth birthday are eligible for this free program in Beltrami County. Community Partners: Red Stu Breakfast Bar, Beltrami Electric Operation RoundUp, Friends of the Bemidji Public Library, and Friends of the Carnegie.



Volunteer Bemidji

In partnership with area non-profits, for-profits, civic, and community organizations, this online tool allows local agencies to share volunteer and job opportunities, charitable agencies accepting household donations, community resources, and more. Visit VolunteerBemidji.org to see what needs are in our community, and sign up to be of service to others.



Wheels to Work

Dondelinger GM partners with United Way on a new transportation program called "Wheels to Work: Fueling Opportunities to Thrive". This program assists local families with transportation and vehicle repair assistance to ensure they can get to work and receive needed services. Community Partners: Dondelinger GM, Northwest Minnesota Foundation, Otto Bremer Foundation, and United Way Partner Agencies.



Coats for the Community

Each year donations of gently used, clean winter coats and outerwear for men, women, children and infants are collected. More than 3,000 cold-weather items are collected and distributed to our Bemidji neighbors to keep them warm and dry during the winter. Community Partners: Paul Bunyan Broadcasting's KZY95.5, KB101, Z99 and KBUN, Lueken's Village Foods, and First Lutheran Church.



Thanksgiving Meals

Each Thanksgiving, meals are prepared and delivered to local families who would not have access to a delicious full meal without community support. This program is made possible through the support of volunteers who assist in preparing and delivering meals. Community Partners: Bar 209, Lueken's Village Foods, and United Way Partner Agencies.



Holiday Gifts For Kids

Each December children get to experience the joy of the holidays thanks to the generosity of our community. Parents or legal guardians register for the Holiday Gifts for Kids program and have the opportunity to choose a gift for their child on distribution day. In addition, each family receives a board game to enjoy together. Community Partners: RP Broadcasting's Babe County 98.3 and Mix 103.7, Sanford Center, First National Bank Bemidji, and Bemidji Ambulance.

LIVE UNITED



United Way
of Bemidji Area

Give UNITED



Thanksgiving Meals



Partner Agencies



Community Campaign



Pacesetter Businesses



Women United Tribute Awards



Wheels to Work



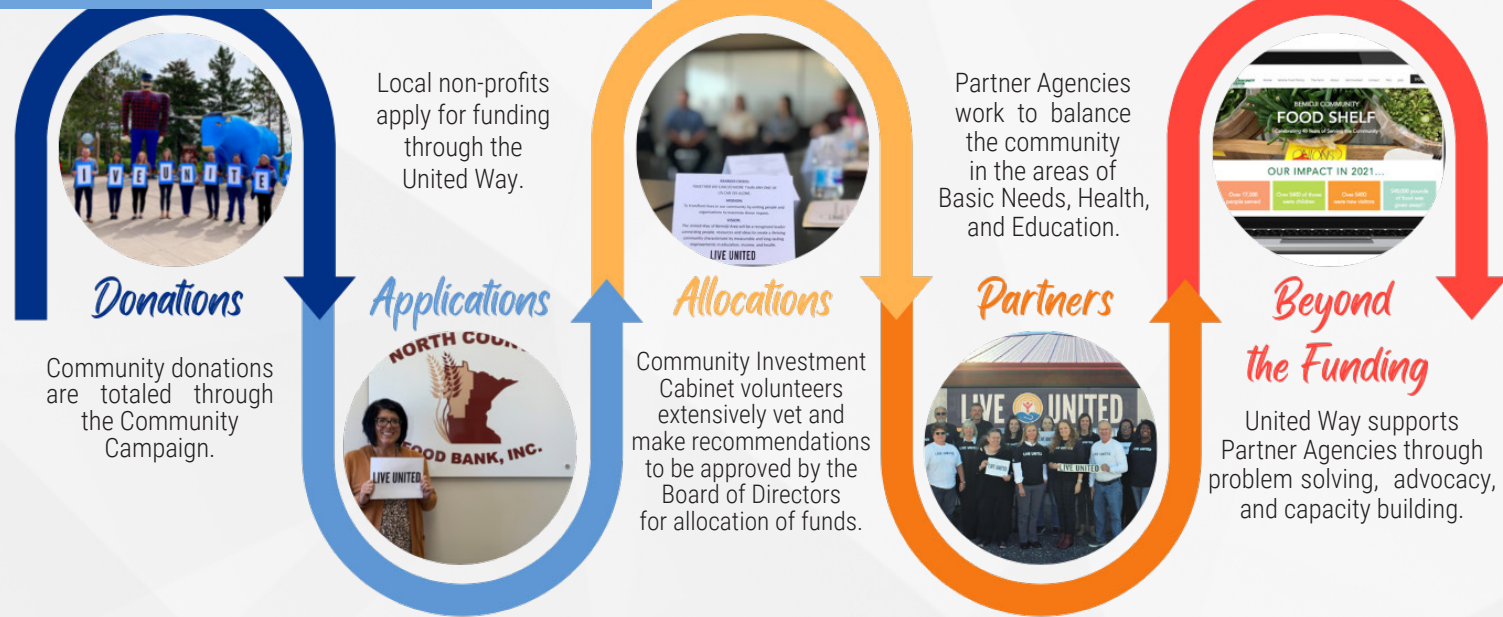
Backpack Buddies Weekend Food Packs

**Our Mission: To transform lives in our community
by uniting people and organizations to maximize donor impact.**



Pathway to Funding:

HOW DONOR DOLLARS ARE INVESTED



2022-2023 Partner Agencies:

BASIC NEEDS



HEALTH

EDUCATION

How We Help

OUR PARTNER AGENCIES

Grant Funding:

The United Way Community Campaign raises funds for local non-profits that work on Basic Needs, Health & Education. Your gift is entrusted into the capable hands of trained community volunteers, called the Community Investment Cabinet who work together to carefully invest funds into local programs and initiatives that achieve the greatest impact and create opportunities for a better life.

Additional funding the United Way of Bemidji Area facilitates include: Community Response Funding, Child Abuse Prevention Funding, Suicide Prevention Funding, Beltrami County ARPA Funding, and Beltrami County Emergency Food & Shelter Grant Funding.

Community Initiatives Highlights:

United Way works with their Partner Agencies to solve collaborative issues the agencies are facing. United Way staff serve on various boards, committees and community initiative groups to help solve community problems and support more local families.

Our most recent example began in October 2022, when United Way launched the Wheels to Work program. Wheels to Work, in partnership with Dondelinger GM, supports Beltrami County families with transportation and vehicle repairs. Since the launch of the program, Wheels to Work has served 48 families in our area.

United Way Affinity Groups:

United Way hosts a variety of Affinity Groups to engage community-minded individuals in opportunities to network, raise funds, advocate, and CREATE CHANGE within our community.



Local Impact:

- Northwoods Battered Women's Shelter new facility
- Bemidji Community Food Shelf's Mobile Food Pantry
- Village of Hope "Shuttle for Shelters" project
- Tribute Awards recognizing women in our community who make an impact



Local Impact:

- Food Pantry for Bemidji High School
- Bridges Out of Poverty conference
- "COVID Caravan" event to share accurate information
- Race Relations Panel
- Ridgeway Neighborhood Initiative



Local Impact:

- "Bucky's Cupboard" Food Pantry at Bemidji State University
- Campus-wide winter items and food drives
- Volunteer opportunities for students



- Rob Belanger, President**
Community Member
- Justin Kaney, Vice President**
Bemidji Brewing
- Nikki Brink, Past President**
First National Bank Bemidji
- Amber Coquette, Treasurer**
Karvako, P.A.
- Sarah Hokuf, At Large**
Evolve Creative
- Andrea Kingbird, At Large**
City of Bemidji
- Drew Hildenbrand**
Bemidji Middle School
- Arlene Hogquist**
Beltrami Electric Cooperative
- Nina Johnson**
Bemidji State University
- Jeff Lind**
Beltrami County
- Lori Lundberg**
Northwoods Lumber
- Jason Rylander**
Bernick's of Bemidji
- Megan Steigauf**
Sanford Health

2022 COMMUNITY INVESTMENT CABINET

- Jordan Anderson**
Ultima Bank Minnesota
- Amber Coquette**
Karvako, P.A.
- Georgia Del Favero**
First National Bank Bemidji
- LaVon Dennistoun**
Dennistoun Consulting
- Karla Eischens**
Sanford Health
- Mary Fairbanks**
Retired/Bemidji State University
- Tiffany Fettig**
HRDC/Greater Bemidji
- Gwenia Fiskevold Gould**
BSU Alumni & Foundation
- Megan Hill**
Bemidji Brewing
- Kurt Knott**
RiverWood Bank
- Christine Maxwell**
Northland Fishing Tackle
- Kyle McMartin**
Bemidji Middle School
- Kirsten Molash-Searles**
Sathre Title & Abstract, Inc.
- Tyler Smith**
Security Bank USA
- Mark Stodola**
Retired Air Force/NTC
- Abbey Swanson**
Miller McDonald, Inc.